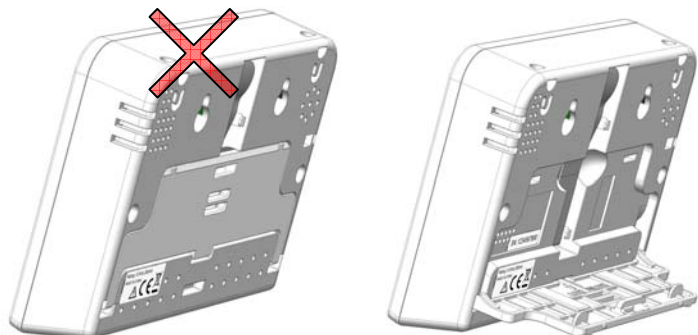
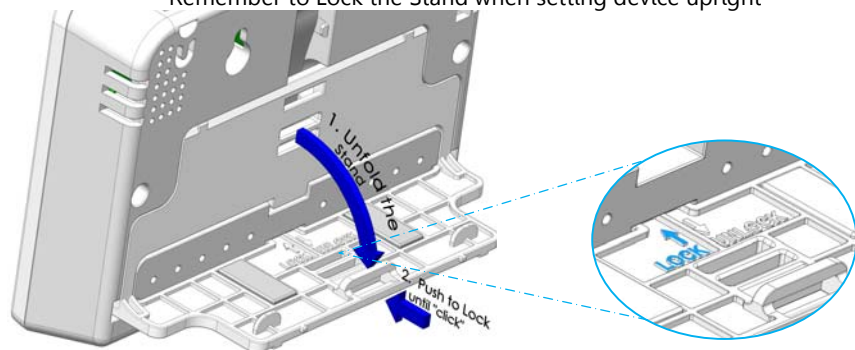


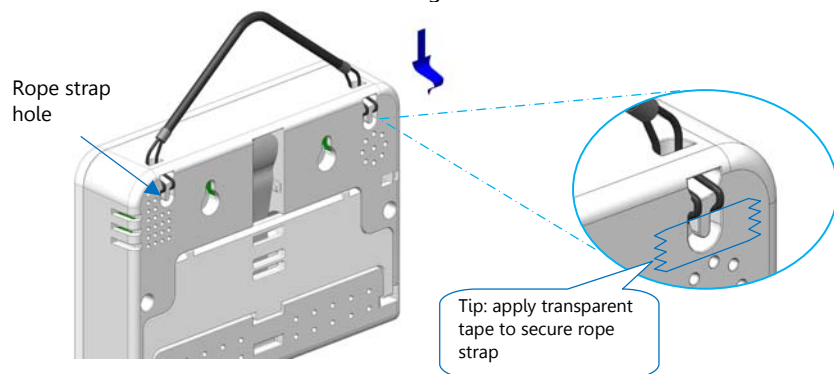
## Set On Desktop



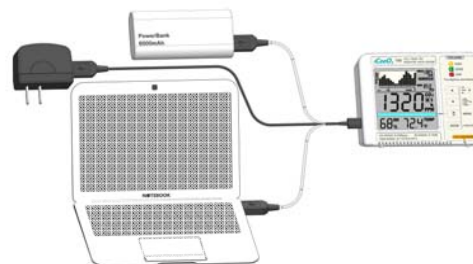
Remember to Lock the Stand when setting device upright



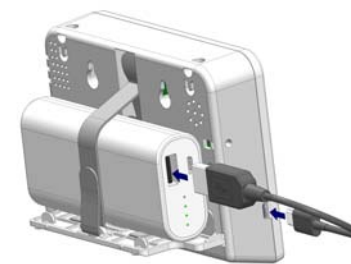
or Hang on a wall



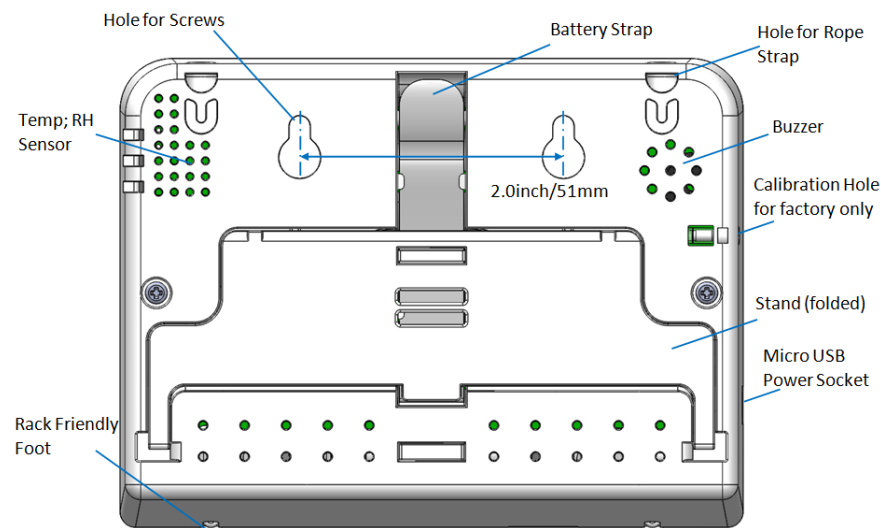
## 3 convenient ways to power up



## Piggyback an External Battery (Battery not included)



## Back View



## Human Mode and Plant Mode:

use MENU key, enter into ADV

select Human or Plant Mode according to your major application

(to confirm Human Mode you need to **hold** ENTER key, instead of **press** ENTER)

\* \* \* \*